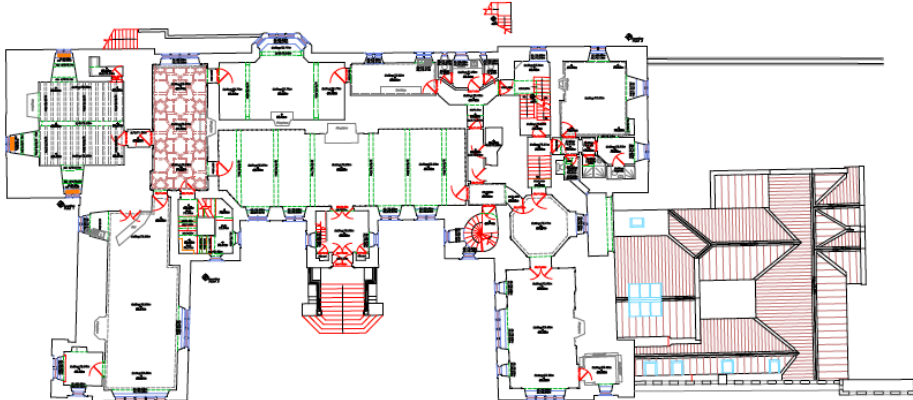
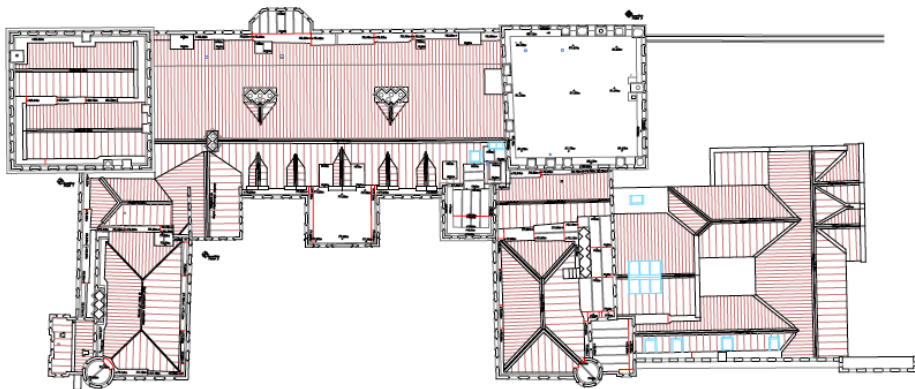


Ground Floor Plan.



First Floor Plan.



Upper Roof Plan.



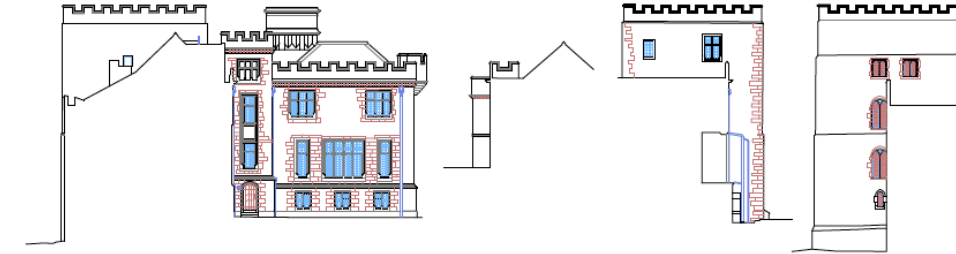
0.0m 10.0m

Elevation 1.



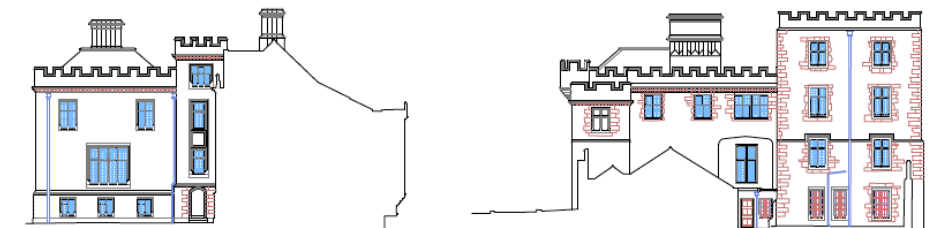
0.0m 10.0m

Elevation 2.



0.0m 10.0m

Elevation 3.

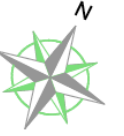


0.0m 10.0m

Elevation 4.

0.0m 10.0m

Elevation 5.



OS Note:
Some services may have been parked due to parked vehicles.
The Ordnance Survey file is to be used as a guide only.

OS Buildings [Grey Box] Surveyed Buildings [Yellow Box]

This survey has been referenced to the Ordnance Survey (OS) National Grid (OSGB36) via Global Navigation Satellite System (GNSS) and the O.S. Active Network (OS Act).

A true OSGB36 coordinate has been established near to the site centre via a transformation using the OSTN02 & OSTN03 transformation models.
The survey has been corrected to this point and a further one or more OSGB36 points established to create a true O.S. bearing for angle orientation.

No scale factor has been applied to the survey therefore the coordinates shown are arbitrary & not true O.S. Coordinates unless have a scale factor applied.

Please refer to Survey Station Table to enable establishment of the survey grid.

Building Survey Legend:

SH 1.00	SB Height from FFL
HW 2.12	Head Height from FFL
SL 31.00m	SB Level from defined datum
HL 52.50m	Head Level from defined datum
Sup. Chk: 2.00	Suspended Ceiling Height from FFL
Street Chk: 2.00	Structural Ceiling Height from FFL
Sup. Cklt: 30.00m	Suspended Ceiling Level from datum
Street Cklt: 31.00m	Structural Ceiling Level from datum
FL: 100.00m	Internal Floor Level (General)
+100.00m	Internal Floor Level (Specific)

Insertion Point for window drawings of other floors or details.

Legend:

[Red Line]	Structural	[Blue Line]	Survey
[Green Line]	Plumbing	[Purple Line]	Roof
[Yellow Line]	Electrical	[Pink Line]	Internal
[Orange Line]	Gas	[Light Blue Line]	External
[Light Green Line]	Water	[Light Purple Line]	Roof
[Light Yellow Line]	Electric	[Light Pink Line]	Internal
[Light Orange Line]	Gas	[Light Light Blue Line]	External
[Light Light Green Line]	Water	[Light Light Purple Line]	Roof
[Light Light Yellow Line]	Electric	[Light Light Pink Line]	Internal
[Light Light Orange Line]	Gas	[Light Light Light Blue Line]	External
[Light Light Light Green Line]	Water	[Light Light Light Purple Line]	Roof
[Light Light Light Yellow Line]	Electric	[Light Light Light Pink Line]	Internal
[Light Light Light Orange Line]	Gas	[Light Light Light Light Blue Line]	External

greenhatch group

Rowan House
Duffield Road
Little Eaton
Derby
DE21 5DR

Tel: (01332) 830066 Fax: (01332) 830055
info@greenhatchgroup.co.uk
www.greenhatchgroup.co.uk

Client: Simpson & Brown Architects

Project: Ford Castle
Ford & Etal Estate
Northumberland

Title: Floor Layout Plans
& Elevations.

Scale: A1@ 1:200

Date: 17/06/16

Drawn: SB

Quality Ref: B1533

Level: OS GPS

Grid: OS GPS

Job Number: 23450

Drawing No.: 23450_01_P

Rev: 0

Comments:
This plan should only be used for its original purpose. Greenhatch Group accepts no responsibility for this plan if applied to any party other than the original client.
All dimensions should be checked on site prior to design and construction.
Damage Information (where applicable) has been visually inspected from the surface and therefore should be treated as approximate only.

CLIENT: Simpson & Brown Architects

PROJECT: Ford Castle
Ford & Etal Estate
Northumberland

TITLE: Floor Layout Plans
& Elevations.

SCALE: A1@ 1:200

DATE: 17/06/16

DRAWN: SB

QUALITY REF: B1533

LEVEL: OS GPS

GRID: OS GPS

JOB NUMBER: 23450

DRAWING NO.: 23450_01_P

REV: 0

Comments:
This plan should only be used for its original purpose. Greenhatch Group accepts no responsibility for this plan if applied to any party other than the original client.
All dimensions should be checked on site prior to design and construction.
Damage Information (where applicable) has been visually inspected from the surface and therefore should be treated as approximate only.